

Welcome to Wasdale Campsite

We hope you enjoy your stay. Here is some information to help you get the most out of your visit.

General site information

- Make sure tents are at least six metres apart (approximately seven paces)
- Please be quiet, especially from 11pm-7am, and be considerate of other campers
- Help us keep the site clean by using the bins and recycling points provided
- Sorry **no fires** are allowed including those in barbecues
- Well behaved dogs on leads are welcome so long as they are cleared up after
- If you have any problems during your stay, please tell a member of staff and we will do our best to help.

Shop and reception

Opening times vary depending on the season. For current opening times, please see the shop/reception white board.

The shop sells a range of food, fresh pastries, hot drinks, confectionery, camping equipment, maps, etc.

You can also charge phones and find out lots of things to do in the area.

If you want anything, just come and ask and we will do our best to help.

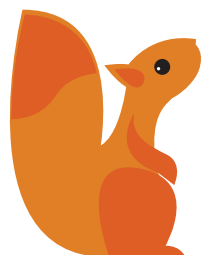


Emergencies

- For emergencies please call **999** stating:
- Your name
 - Your location: Wasdale Campsite, Cumbria. CA20 1EX
 - Grid reference: NY 182 074

Membership offer

Join the National Trust on site and visit hundreds of amazing and fascinating places for free. Ask at reception for details.



Campsite entrance and exit

You are here

Barrier

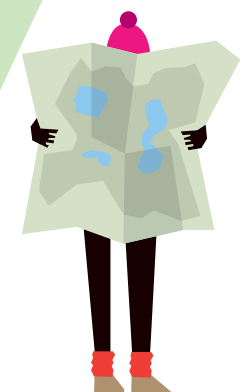
Barrier

One way

Pop-up café and membership pod

To Wasdale Head in dry conditions!

To Scafell Massif Have you got your map and compass?



Additional information

Key

Pathways	Reception and shop
Toilets	Telephone
Disabled toilet	Nordic tipi
Water point	Camper van parking
Laundry	Recycling point
Showers	Pay & Display Parking
Fire points	Tent hook-up point
Elsan point	

Pods

P1 Lingmell	P5 Illgill
P2 Gable	P6 Scafell
P3 Yewbarrow	P7 Kirkfell
P4 Pillar	



Welcome to Wasdale

A valley constantly re-creating itself with the ever-changing weather and every passing season.

Thank you for choosing to stay at our campsite. Your campsite fees help us to look after this very special landscape for future generations to enjoy.



Things to do

Surrounded by England's highest peaks, Wasdale has an amazing range of mountain walking. However the valley paths deliver just as much drama. Whether you crave high adventure, peaceful views or gentle walks, here's what we suggest to make the most of your stay.

Woodland Strolls

Towards the southern end of the lake and Nether Wasdale, there are natural woodlands with winding paths. Take a picnic and enjoy the stunning views on a low level walk.

Tour of Wasdale Head

This route incorporates valleys, intimate river banks, treas ancient packhorse tracks and grabs views of secret waterfalls. The walk can be cut short or extended at a number of points making it family friendly.

Climbing and Scrambling For the experienced

The crags of Wasdale have been, and continue to be, an inspiration for rock and ice climbers. The range of routes is superb from 3 star mountain classics to ground breaking routes. For those wishing to scramble then the routes on Lord's Rake and Yewbarrow offer plenty of excitement. Drop into the Wasdale Head Inn and Barn Door shop to create the classic climbing experience.



Pop to Cotswold Outdoor in Ambleside, Grasmere or Keswick, where experts are on hand to help with all of your camping needs.

In partnership with

COTSWOLD
outdoor

COTSWOLDOUTDOOR.COM/KNOWLEDGE

15% discount* in store for National Trust members

*Selected lines only. Not to be used in conjunction with any other offer or discount. Only valid on production of your National Trust membership card in store or use of valid discount code online. Offer expires 31.12.17

Scafell Pike

Planning to conquer England's highest mountain? Are you properly equipped and experienced using a map and compass?

Please stay safe

Your kit should include appropriate clothing, equipment and enough food and drink.

Allow **4-6 hours** to climb Scafell Pike and return, depending on your fitness and make sure that you give yourself enough daylight.

Be aware of the weather forecast and be prepared to alter your plans if conditions deteriorate. A lovely warm day in the valley can turn to severe winter white out conditions on the mountain tops.

Maps and compasses are available at the campsite shop as well as the latest mountain weather forecast.

Pitched path repair

The Ranger team in the West Lakes helps to look after 40,000 acres of mountain, fell, woodlands and farms. If you see them in their red jackets, feel free to stop and chat or ask any questions that you may have about Wasdale.



Did you know that on the main route up Scafell Pike, it costs £150 to repair one metre of stone pitching?

Basic maintenance of this path costs £12,000 per year.

Your campsite fees help us to look after these special places. If you would like to continue supporting our conservation work, you can become a National Trust member.

Please ask at reception – our team will be happy to help.

Three Peaks Challenge

This involves climbing the highest mountains in Scotland (Ben Nevis) Wales (Snowdon) and England (Scafell Pike) often in under 24hrs.

These events can have a negative impact on the mountain environment as well as the local area through erosion, noise, litter and overnight disturbance.

If you are determined to undertake the challenge, then please visit www.threepeakspartnership.co.uk for route guidance, kit list and up to date local information on how to minimise your impact on all three mountains.



www.ntlakescampsites.org.uk